
InnovaSystems, Inc.

Technology Engineering



- **Automated Metered Dose Inhaler Testing**
- MDI AS – Agitates and Actuates a Single Canister within Its Patient Actuator
- Provides Unattended Wasting, Weighing and Collection for Analysis
- Minimizes Dose Content Uniformity Variability Providing Reproducible Agitation and Actuation
- Reduces Repetitive Motion Injuries

MDI AS – Automated Agitation/Actuation

The MDI AS...

Automates the agitation and actuation of a MDI canister. Agitates and actuates a single MDI in a patient actuator to the priming/wasting port or to an external device for collection or analysis.

Integrated with the Docking/Collection Station automates wasting, actuating for spray pattern and plume geometry and collection for particle size. Can dock to a collection device for dose assay and to the Anderson Cascade Impactor and Next Generation Impactor to support particle size testing. Integrated with the Dose Weight & Docking/Collection Station automates all of the above functions plus weighing for dose weights.

Supports 21 CFR Part 11 Compliance and simplifies validation with the optional IQ/OQ documentation.

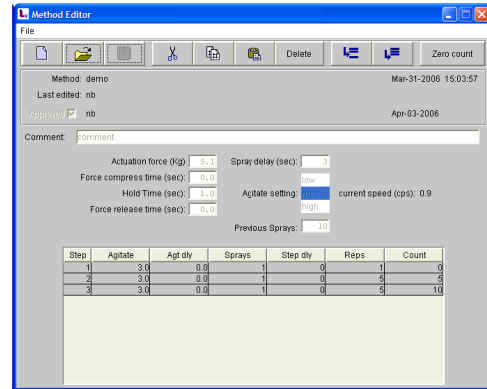
Includes

- MDI AS Station
- One (1) Patient Actuator Adaptor
- Calibration Kit
- MDI AS Application Software

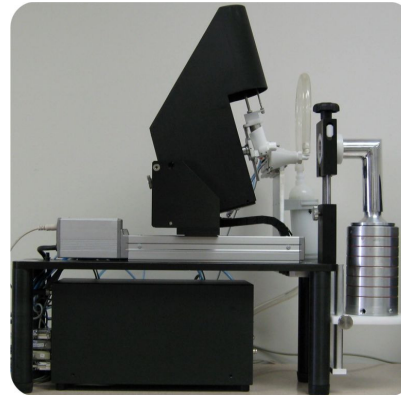
Options

- Collection Station
- Dose Weight & Collection Station
- Computer
- IQ/OQ, Validation Protocols

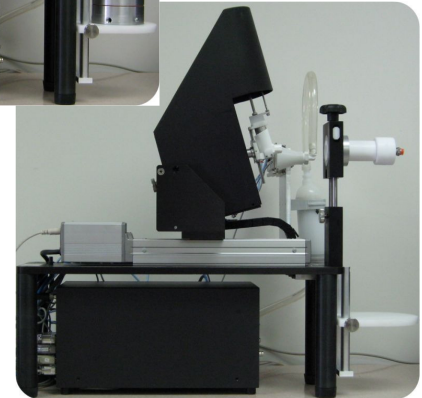
CONTROL PARAMETERS



COLLECTION STATION



Collection into Cascade Impactor or Collection Tube



Specifications

Space Requirements	Height	Width	Depth
Actuator	10.0in	4.0in	9.0in
	Power	Air	
Utilities	110/220 VAC 50/60 Hz	80-100 PSI	

For more information contact

InnovaSystems, Inc.
1245 N. Church Street, Unit 6
Moorestown, NJ 08057
856-722-0410

www.InnovaSystemsInc.com
info@InnovaSystemsInc.com