
InnovaSystems, Inc.

Technology Engineering



- **Automated Metered Dose Inhaler Testing**
- MDI DW (Dose Weight) Automates FDA Recommended Tests:
 - Actuations
 - Dose (Shot) Weights
 - Priming/Repriming
 - Tail-Off
 - Leak Rate
- Automates Agitation and Actuation to Waste of Metered Dose Inhalers
- Increases Throughput and Productivity
- Improves the Accuracy and Reproducibility of Results

MDI DW – Automated Dose Weight

The MDI DW...

Automates the routine Waste Sprays and Dose (Shot) Weights of the Metered Dose Inhaler Product. Provides unattended processing of up to 40 inhalers, agitating and actuating four inhalers simultaneously on the MDI FD-4.

Transports inhalers, with the XYZ gantry, to perform agitations, waste sprays and weighing. Capable of testing both x-valve or x-actuator. Sprays are collected via a waste collection manifold or filter system.

Supports 21 CFR Part 11 Compliance and simplifies validation with the IQ/OQ documentation.

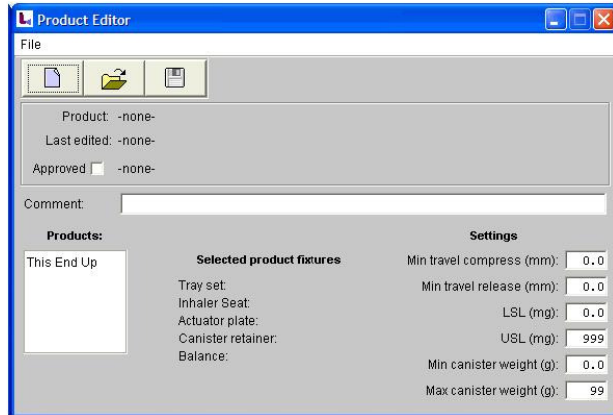
Two Models of the MDI DW are available:

- MDI DW-XV (X-Valve, without the patient actuator)
- MDI DW-XA (X-Actuator, with the patient actuator)

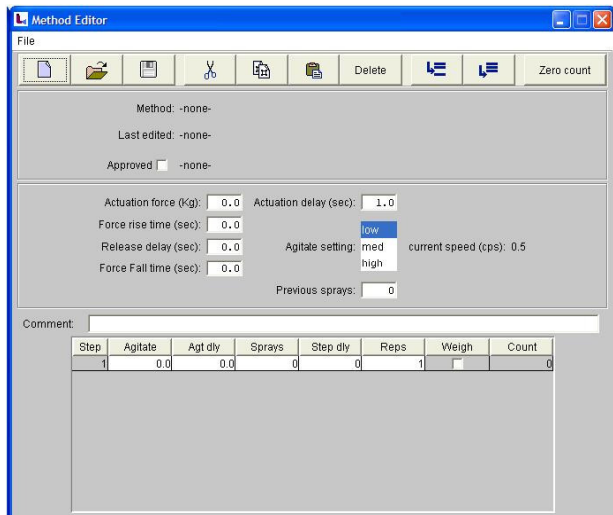
Includes

- Dose Weight Station with Transport, Gripper and Controller
- MDI FD-4
- Analytical Balance
- Canister Trays
- Enclosure
- Validation Protocols, IQ/OQ
- MDI DW Application Software

PRODUCT PARAMETERS



METHOD EDITOR



Specifications

Space Requirements	Height	Width	Depth
Station	84in	72in	45in
	Power	Air	Vacuum
Utilities	110/220 VAC 50/60 Hz	80-100 PSI	30 liters/minute @100mbar

For more information contact:

InnovaSystems, Inc.
1245 N. Church Street, Unit 6
Moorestown, NJ 08057
856-722-0410

www.InnovaSystemsInc.com
info@InnovaSystemsInc.com