

---

## ***InnovaSystems, Inc.***

*Technology Engineering*

---



- **Automated Nasal Spray Products Testing**
- Automated Actuator for Nasal Spray Products
- Easy Transfer of Actuation Technology
- Automation of FDA Recommended Tests
- Reproducible Actuation Force
- Monitors Force and Travel
- Reduced Repetitive Motion

---

## ***MightyRunt*** – Automated Actuations

# The MightyRunt...

Automates the routine Actuation of your Nasal Spray Product. Just place the Bottle on the platform, select a stored method, and start. The station sprays the bottle with the user-defined, reproducible actuation force and times.

Allows you to start simple and easily add capabilities as your needs change. Since the MightyRunt Technology is integral to all the Nasal Spray automation stations, transfer those product parameters to any of InnovaSystems' products.

Supports 21CFR Part 11 Compliance and simplifies validation with the optional IQ/OQ documentation.

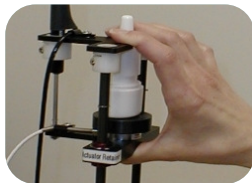
### Includes

- Actuation Station & Controller
- Calibration Kit, Force & Travel
- Actuation Software

### Options

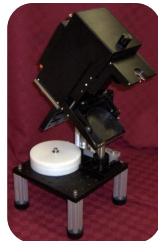
- Computer
- Waste Spray Collector
- Validation Protocols, IQ/OQ
- Hand Actuation Monitor (HAM)

Interfaced to the the MightyRunt, captures and stores parameters from manual actuations

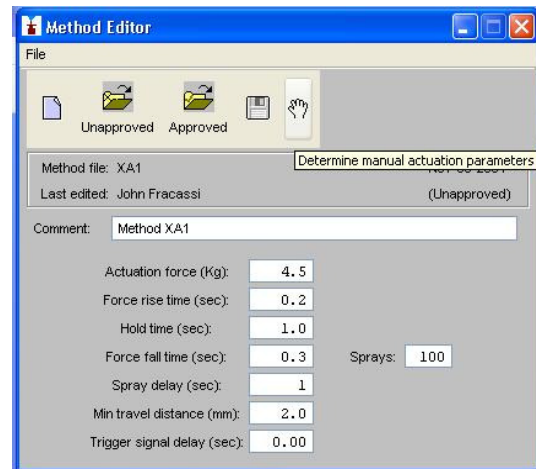


- Angle Mount

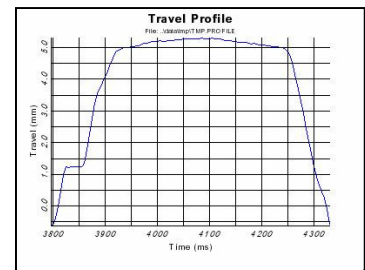
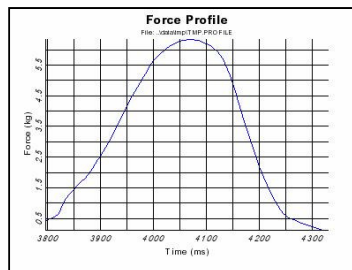
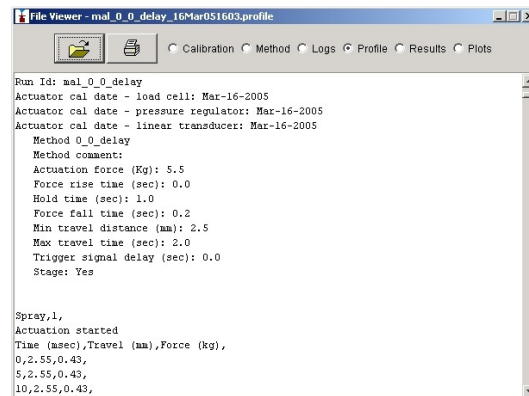
Stand-alone unit provides for orientation with other devices



## CONTROL PARAMETERS



## DATA OUTPUT



## Specifications

Space Requirements	Height	Width	Depth
<ul style="list-style-type: none"> <li>• Actuator</li> <li>• I/O Controller</li> </ul>	7.9in (20.0cm)	3.9in (9.9cm)	8.5in (21.4cm)
	6.8in (17.1cm)	6.1in (15.5cm)	10.2in (25.7cm)
	<b>Power</b>	<b>Air</b>	
<b>Utilities</b>	110/220 VAC 50/60 Hz	100-120 PSI	

For more information contact:

**InnovaSystems, Inc.**  
1245 N. Church Street, Unit 6  
Moorestown, NJ 08057  
856-722-0410

[www.InnovaSystemsInc.com](http://www.InnovaSystemsInc.com)  
[info@InnovaSystemsInc.com](mailto:info@InnovaSystemsInc.com)